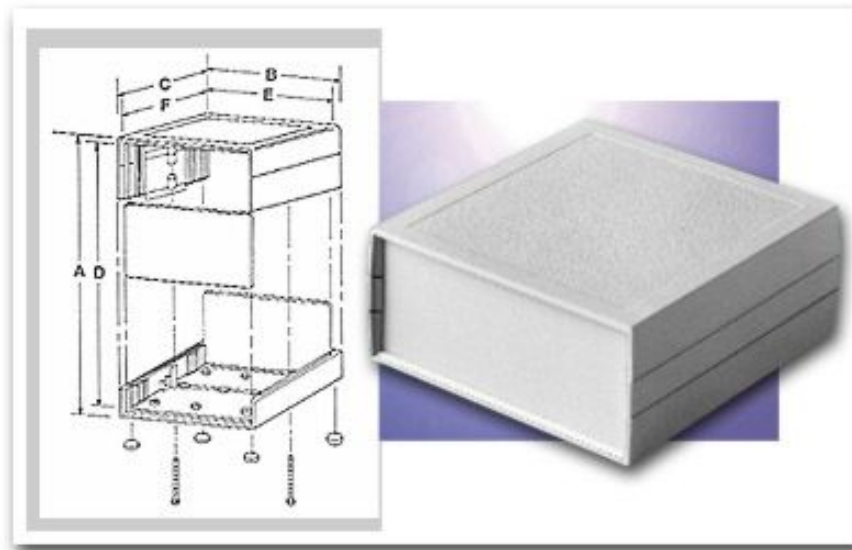


Plastic Boxes  
**Plasticase**  
**Style B**



These sturdy enclosures come in a variety of styles and sizes and are constructed of high quality plastic materials. Housing designs allow complete accessibility to internal components. Contact BUD factory for optional colors, materials, EMI/RFI shielding and custom modifications.

**Design Features**

Style A&B

- \*Impact Resistant Polystyrene
- \*UL94-HB flammability rating
- \*Molded-in Card guides & Mounting Bosses
- \*Comes complete with stainless steel screws & rubber feet
- \*Finish -- Double textured PC bone gray
- \*Shipped Assembled

Plasticase									
Style A & B									
Catalog Number.	Style	A	B	C	D	E	F	Size	Weight (Ozs.)
PC-11402	A	1.53"	5.08"	5.30"	1.28"	4.78"	4.78"	1.31 "x 4.75"x .06"	6
PC-11403	A	1.53"	7.06"	5.30"	1.28"	6.76"	4.78"	1.31 "x 6.73"x .06"	8
PC-11404	A	1.55"	6.33"	9.62"	1.30"	6.03"	9.03"	1.33"x 5.99"x .09"	12

PC-11406	A	2.52"	6.12"	6.32"	2.27"	5.77"	5.73"	2.31 "x 5.75"x .09"	11
PC-11408	A	2.52"	8.10"	6.32"	2.27"	7.75"	5.73"	2.31 "x 7.75"x .09"	12.5
PC-11410	B	3.30"	6.12"	6.32"	3.05"	5.77"	5.73"	3.09"x 5.75"x .09"	12
PC-11412	B	3.30"	8.10"	6.32"	3.05"	7.75"	5.73"	3.09"x 7.75"x .09"	14
PC-11414	B	4.04"	6.12"	6.32"	3.79"	5.77"	5.73"	3.83"x 5.75"x .09"	14.5
PC-11416	B	4.04"	8.10"	6.32"	3.79"	7.75"	5.73"	3.83"x 7.75"x .09"	15.5
PC-11418	B	2.06"	5.08"	5.30"	1.81"	4.78"	4.78"	1.84"x 4.75"x .06"	7
PC-11420	B	2.06"	7.06"	5.30"	1.81"	6.76"	4.78"	1.84"x 6.73"x .06"	9

**BUD INDUSTRIES INC.**

P.O. Box 998

Willoughby, Ohio 44094

Phone: 440-946-3200 Fax: 440-951-4015

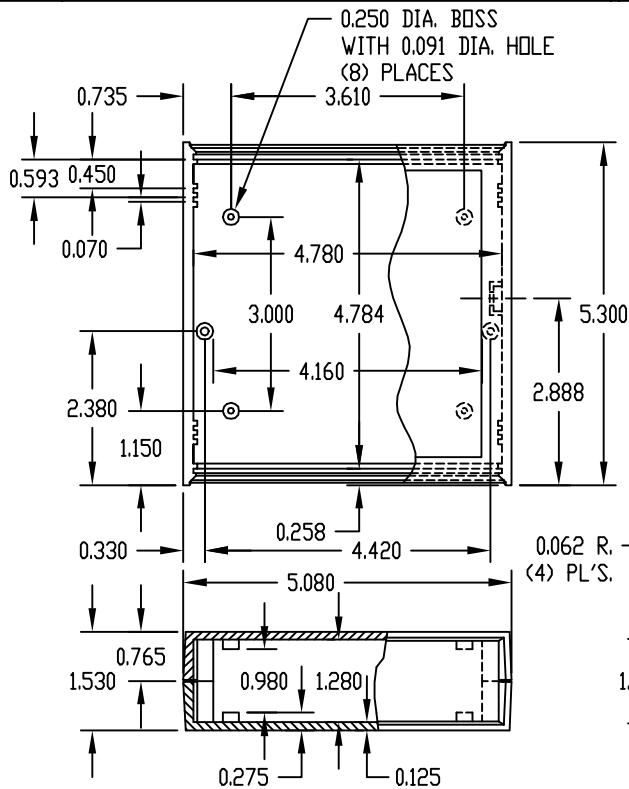
E-Mail: [saleseast@budind.com](mailto:saleseast@budind.com)

PART NAME

PLASTICASE (STYLE A)

PART No.

PC-11402



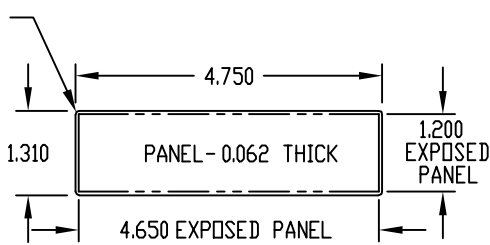
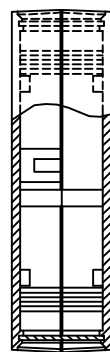
MATERIAL: HIGH-IMPACT POLYSTYRENE

FINISH: DOUBLE-TEXTURED  
PC BONE GRAY

TWO (2) #4 x 1.000" LG. SCREWS & FOUR (4) RUBBER FEET SUPPLIED WITH CASE FOR ASSEMBLY.

NOTE: MOUNTING BOSSES USE EITHER M2.5 METRIC OR #4 STD. SHEET METAL SCREWS x 0.250" LG. (NOT SUPPLIED)

ALL DIMENSIONS HAVE ±0.015 TOLERANCE UNLESS OTHERWISE SPECIFIED

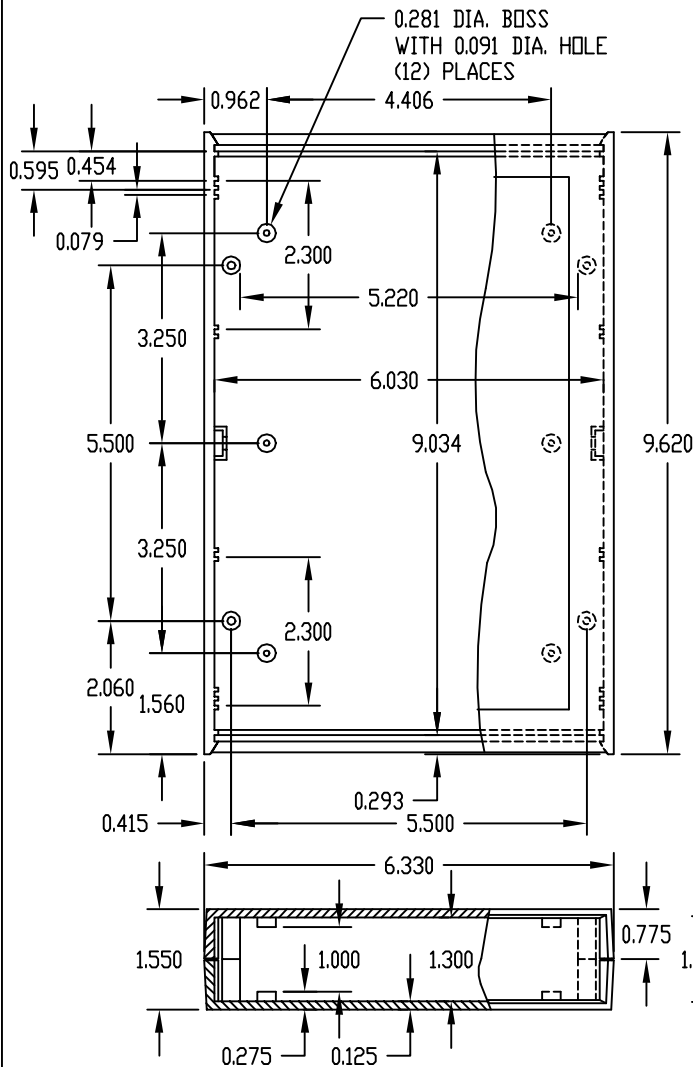


PART NAME

PLASTICASE (STYLE A)

PART No.

PC-11404



MATERIAL: HIGH-IMPACT POLYSTYRENE

FINISH: DOUBLE-TEXTURED  
PC BONE GRAY

FOUR (4) #4 x 1.000" LG. SCREWS & FOUR (4) RUBBER FEET SUPPLIED WITH CASE FOR ASSEMBLY.

NOTE: MOUNTING BOSSES USE EITHER M2.5 METRIC OR #4 STD. SHEET METAL SCREWS x 0.250" LG. (NOT SUPPLIED)

ALL DIMENSIONS HAVE ±0.015 TOLERANCE UNLESS OTHERWISE SPECIFIED

